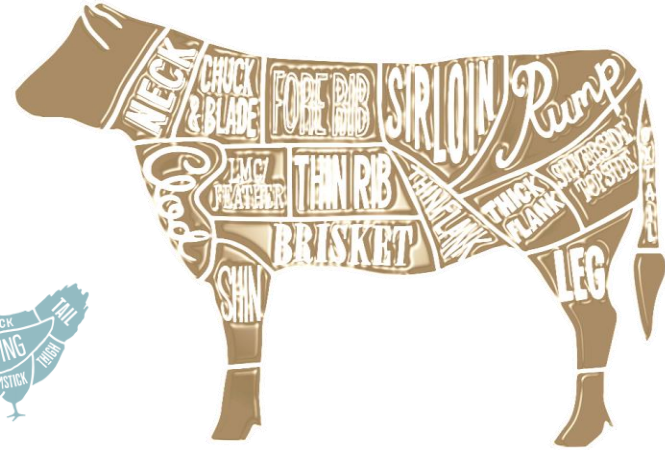


AGRICULTURAL
SEAFOOD
CHICKEN
BEEF



FOOD DIVISION



A decorative graphic on the left side of the slide features several green leaves of various sizes and shades, some with detailed vein patterns. Interspersed among the leaves are several light blue circles of different diameters, creating a modern, organic aesthetic.

Introduction:

● Since 2013 WLLB International Group and Forte Global have worked on various projects in the vast metal and agricultural commodity trading markets. Their extensive trade knowledge enabled the group to secure the most reliable supply networks out of Americas, Europe, Asia and Africa. Following years of successful deliveries of essential commodities needed globally, WLLB and Forte increased their presence in local markets and created strategic alliances with world's largest food products suppliers. This enabled our companies to secure steady supplies of various food products, including sugar, beef, chicken, fish, seafood and more. Our chain of affiliate suppliers, slaughterhouses, recognized testing labs and logistic partners worldwide guarantee steady and undisturbed deliveries to our cherished clients on every continent. Our attention to the consumer safety was at the top of priorities list from the inception of creation of our companies, therefore we strive to deliver products at the highest quality and conforming health highest standards. We offer full range of services from sales to final destination delivery at customers designated port.

Welcome!

Dear client

This document represents a list of various products available for supply by our group. Whatever our client's needs are, we always make sure to source it at the most competitive price level. Customers willing to cooperate with us are welcome to send us their inquiry outlining the type of product, cuts, quantities required per month and delivery term. We will be pleased to present the best offer possible.



Agricultural



White Refined Sugar

Specification:

Maximum Color: 45 icumsa

Minimum Polarization: 99.8 degrees

Maximum Humidity: 0.04%

Maximum Ash: 0.04%

Packaging: 0.25kg, 50kg and jumbo package

SKU#:A17

Crystal Sugar

Specification:

Maximum Color: 150 icumsa

Minimum Polarization: 99.7 degrees

Maximum Humidity: 0.08%

Maximum Ash: 0.08%

Packaging: 0.25kg, 50kg and jumbo package

SKU#:A18

Agricultural

Raw Sugar VHP

Specification:

Maximum Color: 1,200 icumsa

Minimum Color: 600i

Minimum Polarization: 99.1 degrees

Maximum Humidity: 0.3%

Maximum Ash: 0.15%

Packaging: 0.25kg, 50kg and 1,000kg

SKU#:A19

Organic Sugar

Specification:

Maximum Color: 1,100 icumsa

Minimum Color: 400i

Minimum Polarization: 98.5 degrees

Maximum Polarization: 99.5 degrees

Minimum Humidity: 0.5%

Maximum Humidity: 0.15%

Maximum Ash: 0.15%

Packaging: 0.25kg, 50kg and 1,000kg

SKU#:A20



Agricultural

Soybean meal

Specification:
Soybean meal (ANEC 71)
Protein Crude: 44% -46%
Dry matter: 89%
Fat: 1%
Aflatoxin: 34% max
Gross Fiber: 3%
Neutral Detergent Fiber: 7%
Grey: 7% (AOCS Ba 5a-49)
Ureitic Activity: 0.5 (AOCS Ba 9-58)
Calcium: 5.30%
Phosphor: 0.20%
Total Digestible Nutrients: 0.65%
Net Energy / Lactation: 78%
81.1Mcal / 100 lbs

SKU#:A21

Soy

Our producers use the Monsanto Certification for seeds - approved for export.

Maximum Oil: 18.5% (AOCS Ac 3-44)
Maximum Hydration: 14%
Maximum Foreign Matter: 2%
Maximum Damaged Grains: 8.5%
Maximum of Broken Grains: 30%
Maximum Burned Grains: 4%
Maximum of Moldy Grains: 6%
Maximum Green Grains: 8%

Free from poisonous seeds or bark

Tolerance of 1 particle of treated plant seeds with unknown toxicity level for each 1 kg sample in each batch of 5,000 metric tons loaded and 0,005% castor bean and / or castor bean.

(Specification according to ANEC 42.)

SKU#:A22



Agricultural

Acai Berry

Basic Nutrition Facts

Açaí berries are one of the fruits with the highest antioxidant content, even more than blueberries. The açaí berry offers approximately 247 calories per 100-gram serving. A 50-gram serving of powdered, freeze-dried açaí fruit pulp and skin provides about 265 calories, 26 g of carbohydrates, 4 g of protein and 16 g of fat (mostly oleic acid or monounsaturated fat). The powder is particularly rich in calcium and vitamin A

Available in:

Whole frozen bagged as per clients requirements

Frozen Acai Puree

SKU#:A08



ACAÍ
FORTE

Fiber-Rich

A 50-gram serving of powdered, freeze-dried açaí fruit pulp offers about 26 g of dietary fiber, which is nearly 100 percent of the Recommended Daily Value (DV). Fiber comes from plant foods, is essential for a healthy digestive system and, according to a review published in "Current Atherosclerosis Reports" in December 2008, helps lower LDL (bad) cholesterol levels, reducing the risk of coronary artery disease. Foods rich in dietary fiber enhance satiety and help keep you feeling fuller longer, which assists in weight control.

Vitamins and Minerals

Açaí berry powder is particularly rich in vitamin A and the major mineral calcium. Vitamin A acts as an antioxidant in the body, protecting cells from damage by free radicals, charged oxygen particles that come from environmental pollutants and other sources. Vitamin A is also necessary for healthy eyesight and proper growth and development. Calcium is an important bone-building mineral that also helps regulate blood pressure.

Other Beneficial Nutrients

A 50-gram serving of freeze-dried açaí berry pulp offers 16 g of fat, mostly heart-healthy monounsaturated fat (similar to that of another fruit, the avocado). According to the Dietary Guidelines for Americans (DGA), you should control your fat intake, but the fat you choose should be from foods rich in mono- and polyunsaturated fats, for optimum health. In addition, açaí berry powder is protein-rich. Protein is essential for building body cells, tissues and muscles.

Phytochemicals

The açaí fruit offers the highest phytochemical content of any fruit or vegetable. According to an article published in "Molecular Nutrition & Food Research" in February 2010, phytochemicals are plant compounds that offer disease-fighting properties and may benefit health in other ways. Powdered, freeze-dried açaí fruit pulp and skin is rich in two classes of phytochemicals: anthocyanins and phenolics.

Agricultural

Dried Fruits & Nuts

Apricots

Whole

SKU#:A23



Cranberries

Whole

SKU#:A24



Dates

Organic

Pitted

Whole

Chopped

Roundels

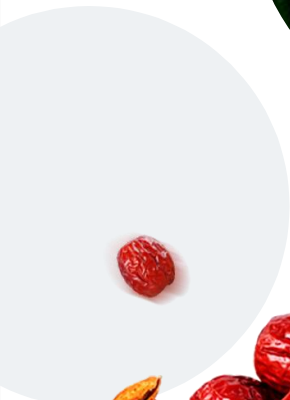
SKU#:A25



Figs

Whole

SKU#:A26



Agricultural

Dried Fruits & Nuts

Prunes

Whole

SKU#:A27



Rasins

Whole

SKU#:A28



Chickpeas

Whole

SKU#:A29



Barberry

Whole

SKU#:A30



Agricultural

Dried Fruits & Nuts

Cashews

Raw

W180,W240, W320,

W450, WS, LP, SWP

SKU#:A31

Processed

Spicy BBQ 12x40g

Spicy BBQ 10x80g

Spicy BBQ 8x170g

Original 8x1kg

Cashews & Almonds Spicy BBQ 10x80g

SKU#:A32



Agricultural

Dried Fruits & Nuts

Pistachios

Raw

18/20, 26/30, 28/32,

21/25 Organic

Kernel Broken

SKU#:A33



Processed

Roasted & Salted 300g

Roasted & Salted 8x1kg

Sea Salt 12x40g

Sea Salt 10x80g

Sea Salt 8x170g

Smokey Chipotle 10x80g

Kernels Whole 10x1kg

SKU#:A34



Agricultural

Dried Fruits & Nuts

Almonds

Raw

Raw Blanched

Ground

SKU#:A35



Processed

Black Pepper 12x40g

Black Pepper 10x80g

Black Pepper 8x170g

Regular 10x1kg

Roasted & Salted 10x1kg

SKU#:A36



Agricultural

Dried Fruits & Nuts

Brazil Nut

Raw Broken
Raw
SKU#:A37



Hazelnut

Raw
Raw Blanched
Raw With Skin
SKU#:A38



Macadamia Nut

Raw
SKU#:A39



Peacan Nut

Raw
SKU#:A40



Seafood



SARDA - Ilisha Amazonica
Ilisha Amazonica
SKU#:S03



APAPA - YELLOW SARDA
Pellona castelnaeana
SKU#:S04



WHITE HAKE - White Drum
Cynoscion leiarchus
SKU#:S05



PIRARUCU - PERUVIAN PAICHE
Arapaima Gigas
SKU#:S06

Seafood



RIBBONFISH

Trichiurus lepturus

SKU#:S07



PALOMBETA - ATLANTIC BUMPER

Chrysurus spp.

SKU#:S08



MARIA MOLE - SEATROUT

Cynoscion spp.

SKU#:S09



PESCADA GÓ - KING WEAKFISH

Macrodon ancylodon

SKU#:S10

Seafood



CORVINA - YELLOW CROAKER
Micropogonias furnieri
SKU#:S11



BASS
Centropomus undecimalis
SKU#:S12



CHESTNUT WHITE CROAKER
Umbrina canosai
SKU#:S13



TUNA GALL YELLOW
Thunnus albacares
SKU#:S14

Seafood



SARDINE - SARDINE
Sardina pilchardus
SKU#:S15



HAKE YELLOW - YELLOW WEAKFISH
Cynoscion covers
SKU#:S16



ARIACÓ LANE SNAPPER
Lutjanus synagris
SKU#:S17

Chicken



Chicken Feet

(35g and up)

SKU#:C02



<p>Commodity: Grade A Frozen Chicken Feet Sizes: 35g and up Length: 10 cm to 15 cm length Packaging: 5kg poly bags x 2 = 10 kgs per Carton Origin: Brazil Shipment: 18 degrees Reefer containers (2250 cartons per 40 FCL) Form: Chicken Feet Purity: No-smell</p>	<p>Specifications: Finesse/moisture 3-5% Mode of transportation/shipment: SEA/SHIP REEFER CONTAINERS BOF frozen chicken Grade A No black pad of Ammonia No bruise No bad smell Yellow skin off No nails No broken bones No feathers Washed and cleaned No extravagated blood Moisture less than 3% Ice content: less than 0.3% Broken bones less than 1.0%</p>	<p>Frozen Requirements: Blasted and produced at minus 40 degrees Celsius Stocked at minus 18 degrees Celsius Temp during transport minus 10-15 degrees Celsius Washed and clean full loaded refrigerated containers containing 27 Metric tons</p>
--	--	---

Chicken



Chicken Paws

(15g and up)

(25g and up)

SKU#:C03



<p>Commodity: Grade A Frozen Chicken Feet Sizes: 15g and up & 25g and up Length: 10 cm to 15 cm length Packaging: 5kg poly bags x 2 = 10 kgs per Carton Origin: Brazil Shipment: 18 degrees Reefer containers (2250 cartons per 40 FCL) Form: Chicken Feet Purity: No-smell</p>	<p>Specifications: Finesse/moisture 3-5% Mode of transportation/shipment: SEA/SHIP REEFER CONTAINERS BOF frozen chicken Grade A No black pad of Ammonia No bruise No bad smell Yellow skin off No nails No broken bones No feathers Washed and cleaned No extravagated blood Moisture less than 3% Ice content: less than 0.3% Broken bones less than 1.0%</p>	<p>Frozen Requirements: Blasted and produced at minus 40 degrees Celsius Stocked at minus 18 degrees Celsius Temp during transport minus 10-15 degrees Celsius Washed and clean full loaded refrigerated containers containing 27 Metric tons</p>
---	--	---

Chicken



Whole Chicken
HALAL & ORGANIC available
SKU#:C04



Whole Wings
SKU#:C05



Drumstick
SKU#:C06



Whole Leg Boneless
SKU#:C07

Chicken



Middle and 3 Joint Wings
SKU#:C08

Whole Breast with bone
SKU#:C09

Trimming
SKU#:C10

Breast
SKU#:C11

Chicken



Thighs
SKU#:C12

Boneless Leg no skin
SKU#:C13

Whole Leg
SKU#:C14

Wing Tips
SKU#:C15

Chicken



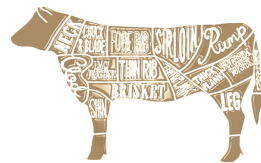
OFFALS

Liver
SKU#:C16

Heart
SKU#:C17

Gizzards
SKU#:C18





Beef



Neck
SKU#:B18



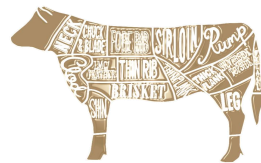
Chuck
SKU#:B19



Brisket
SKU#:B20



Shoulder
SKU#:B21



Beef



Shin
SKU#:B22



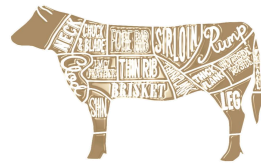
Hump
SKU#:B23



Cube Roll
SKU#:B24



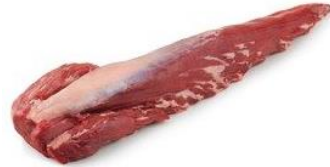
Striploin
SKU#:B25



Beef



Rump Cap
SKU#:B26



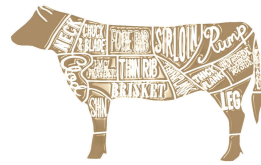
Tenderloin
SKU#:B27



Rump Heart
SKU#:B28



Topside
SKU#:B29



Beef



Eye Round
SKU#:B30



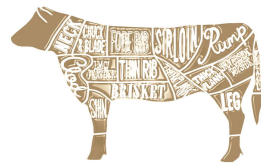
Rump Tail
SKU#:B31



Silverside
SKU#:B32



Flank
SKU#:B33



Beef



Knuckle
SKU#:B34



Shank
SKU#:B35



SHOULDER CLOD OYSTER BLADE CHUCK TENDER NECK



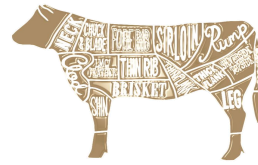
SHOULDER COVER SHIN SHOULDER HEART CHUCK BRISKET

Forequarter cut
SKU#:B36



Trimming
SKU#:B37

Beef



OFFALS

Aorta
SKU#:B38



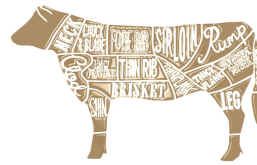
Honeycomb
SKU#:B39



Diaphragm Membrane
SKU#:B40



Beef



Paddywack
SKU#:B41



Omasum
SKU#:B42

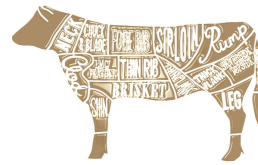


Tripe
SKU#:B43



Tendons
SKU#:B44

Beef



Spinal Cord
SKU#:B45



Testicles
SKU#:B46

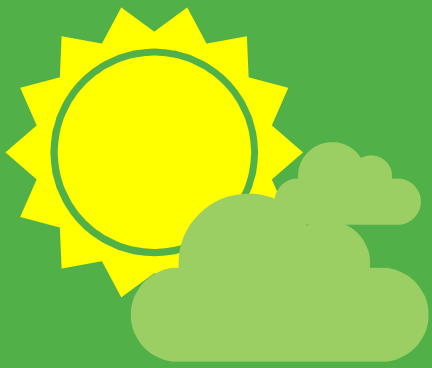


Tongue
SKU#:B47



Summary

- Thank you for reading the list of available products
- Please remember to specify delivery terms
- Remember to fill out our order form and KYC



THANK YOU !!!

Feel free to contact us at anytime:

luke@wllbgroup.com



